



# EMSCULPT neo<sup>®</sup>

The  
**one**  
in Body  
Shaping

**LESS** Fat

Muscle **MORE**



# The First of Its Kind

EMSCULPT NEO is considered a breakthrough in non-invasive body shaping. This revolutionary procedure simultaneously delivers heat and magnetic energy resulting in **more fat reduction and more muscle growth** compared to any single gold standard product.

**RF & HIFEM+**  
for Fat & Muscle

**+25%**  
Muscle  
on average\* **MORE**

**LESS** **-30%**  
Fat  
on average\*

**COMBINED 30-MIN.  
TREATMENT**



BEFORE

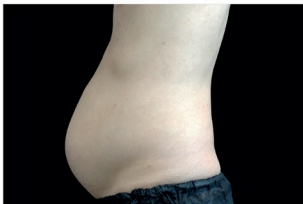


AFTER **EMSCULPT®**

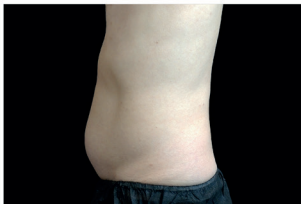


1 MONTH AFTER THE LAST TREATMENT, COURTESY OF: BTL AESTHETICS

BEFORE



AFTER **EMSCULPT®**



3 MONTHS AFTER THE LAST TREATMENT, COURTESY OF: DAVID KENT, M.D.

BEFORE



AFTER **EMSCULPT®**



3 MONTHS AFTER THE LAST TREATMENT, COURTESY OF: BRUCE E. KATZ, M.D.

BEFORE



AFTER **EMSCULPT®**

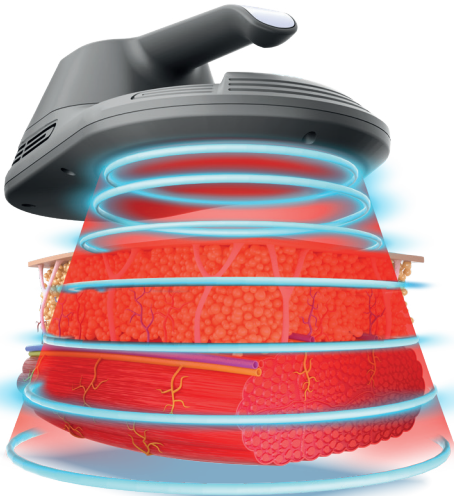


1 MONTH AFTER THE LAST TREATMENT, COURTESY OF: DAVID KENT, M.D.



# How It Works

**EMSCULPT NEO** is the world's first and only technology that uses **Radiofrequency and HIFEM+** (high intensity focused electromagnetic field) to **eliminate fat and build muscles non-invasively.**



**RF**

**HIFEM+**

## **Fat Breakdown**

**In less than 4 minutes the temperature in fat reaches levels that cause their permanent damage.**

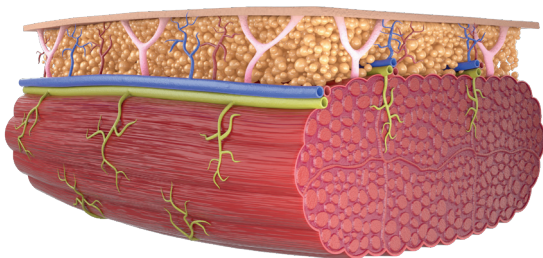
## **Muscle Warm-Up**

**The muscle temperature raises by several degrees, similar to what a warm-up activity does before any workout.**



**LESS** **-30%**  
**Fat**

on average\*



**+25%** **MORE**  
**Muscle**

on average\*

## Supramaximal Contraction

**Muscles** in the treated area **are contracted at intensities** that are **not achievable during routine exercise.**

## After Treatment

**The fat cells are slowly removed** from the body and the strained **muscle fibers initiate a growth process.** This results in **fat elimination and muscle building.**





# More Applicators & Body Parts

Emsculpt NEO individually tailored treatments can help you **eliminate fat and build muscles on various body parts.**

**30**  
minutes

**Fat & Muscle**  
**Non-invasive**



**No Downtime**  
**No Anesthesia**



**Two Therapies in**  
**a Single Treatment**



Walk-in  
Walk-out

Abdomen

Buttocks

Inner Thighs

Outer Thighs

Front Thighs

Back Thighs

Biceps

Triceps

Calves

PATIENTS UP TO BMI 35



BEFORE



AFTER **EMSCULPT!**



1 MONTH AFTER THE LAST TREATMENT, COURTESY OF: DAVID KENT, M.D.

BEFORE

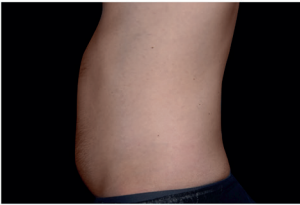


AFTER **EMSCULPT!**

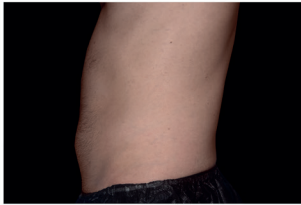


6 MONTHS AFTER THE LAST TREATMENT, COURTESY OF: DAVID KENT, M.D.

BEFORE



AFTER **EMSCULPT!**



3 MONTHS AFTER THE LAST TREATMENT, COURTESY OF: CAROLYN JACOB, M.D.

BEFORE



AFTER **EMSCULPT!**



1 MONTH AFTER THE LAST TREATMENT, COURTESY OF: DAVID KENT, M.D.







BEFORE



AFTER **EMSCULPT®**



3 MONTHS AFTER THE LAST TREATMENT, COURTESY OF: JULENE SAMUELS, M.D.

BEFORE



AFTER **EMSCULPT®**

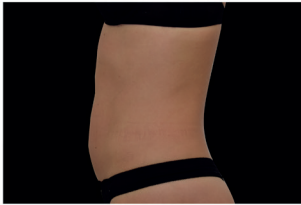


6 MONTHS AFTER THE LAST TREATMENT, COURTESY OF: JULENE SAMUELS, M.D.

BEFORE



AFTER **EMSCULPT®**



1 MONTH AFTER THE LAST TREATMENT, COURTESY OF: BRUCE E. KATZ, M.D.

BEFORE



AFTER **EMSCULPT®**



6 MONTHS AFTER THE LAST TREATMENT, COURTESY OF: JULENE SAMUELS, M.D.





BEFORE

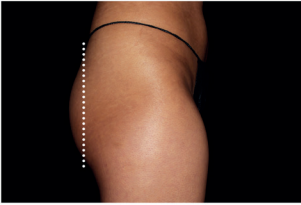


AFTER **EMSCULPT!**

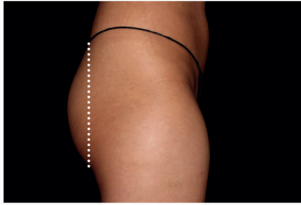


IMMEDIATELY AFTER THE LAST TREATMENT, COURTESY OF: KLAUS HOFFMANN, M.D.

BEFORE



AFTER **EMSCULPT!**



3 MONTHS AFTER THE LAST TREATMENT, COURTESY OF: SUNEEL CHILUKURI, M.D.

BEFORE

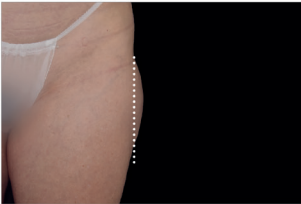


AFTER **EMSCULPT!**

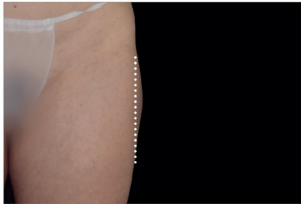


IMMEDIATELY AFTER THE LAST TREATMENT, COURTESY OF: MELANIE PALM, M.D.

BEFORE



AFTER **EMSCULPT!**



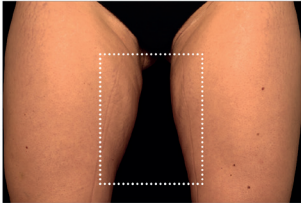
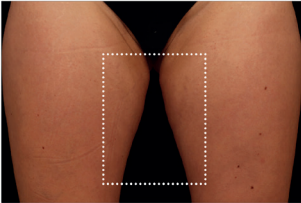
1 MONTH AFTER THE LAST TREATMENT, COURTESY OF: Yael HALAAS, M.D.





BEFORE

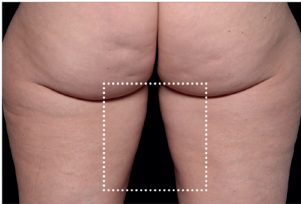
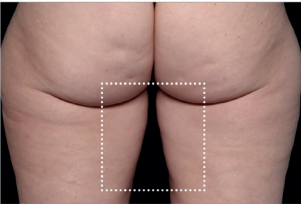
AFTER **EMSCULPT®**



1 MONTH AFTER THE LAST TREATMENT, COURTESY OF: DIANE DUNCAN, M.D.

BEFORE

AFTER **EMSCULPT®**



IMMEDIATELY AFTER THE LAST TREATMENT, COURTESY OF: DIANE DUNCAN, M.D.

BEFORE

AFTER **EMSCULPT®**



3 MONTHS AFTER THE LAST TREATMENT, COURTESY OF: ROBERT WEISS, M.D.

BEFORE

AFTER **EMSCULPT®**



4 WEEKS AFTER THE LAST TREATMENT, COURTESY OF: RAMINDER SALUJA, M.D.





# CORE to FLOOR

EMSCULPT<sup>®</sup>  
EMSELLA<sup>®</sup>

After the **age of 30**, one loses roughly **3% to 5% of one's muscle mass** per decade.\*

**Weak muscles** and lack of exercise leads to **strength, balance, posture and discomfort** issues.

- 1** 66% of women with **abdominal separation** have **pelvic floor disorders**.\*
- 2** Every **11 seconds** an older adult is treated in the **emergency room** for losing balance and falling.\*

Core to floor therapy utilizes **two HIFEM-brand technology procedures** to **strengthen, firm and tone the abdomen and pelvic floor muscles**.

The result is increased **muscle growth and restoration of neuromuscular control**, which can improve strength, balance, posture, and incontinence as well as potentially **alleviate back discomfort**.



## The Whole Core Work Out for Men and Women

**55%**

Average increase in  
Core Strength\*

**68%**

Elderly patients report  
improvement in back discomfort,  
stability, and posture

**“I was pleasantly surprised  
how much stronger I felt with  
Core to Floor Therapy and  
my incontinence improved  
as well.”**

Jenny, Dallas, TX





# TAUT & TONED

EMSCULPT<sup>neo</sup>  
EMTONE<sup>®</sup>

TAUT AND TONED therapy is the **unique combination of EMSCULPT NEO and EMTONE<sup>®</sup> treatment to address fat elimination, improve muscle tone and appearance of cellulite.**

- **90% of women** have cellulite\*
- **Cellulite** is a Multi-Factorial Problem
- **61% of women** want to do something about it\*



**Fast  
1 Hour**



**Addresses  
6 Major Factors**



**Non-Invasive  
No Downtime**



**1** **EMSCULPT NEO** procedure



**2** **EMTONE** procedure



**3** **Repeat it - 4X with 4 times**



# TAUT & TONED

EMSCULPT<sup>neo</sup>  
EMTONE



**TAUT AND TONED procedure combines HIFEM-brand technology, Radiofrequency, and Targeted Pressure Energy (3 technologies) to:**

- Eliminate fat
- Strengthen and tone the muscles
- Smooth the skin
- Boost collagen and elastin fibers
- Increase blood circulation

25%

**Average Increase  
in Muscle Mass\***

30%

**Average Fat  
Reduction\***

93%

**Average Visible  
Reduction in Cellulite\***

The results of TAUT AND TONED are **reduced fat, smoother skin, a more toned physique and renewed confidence** in one's appearance.





BEFORE



AFTER **EMSCULPT®** & **EMTONE**



1 MONTH AFTER THE LAST TREATMENT, COURTESY OF: PATRICIA WALLACE, M.D.

BEFORE

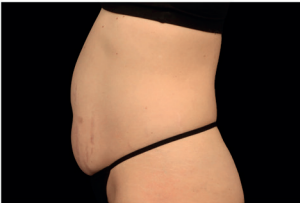


AFTER **EMSCULPT®** & **EMTONE**

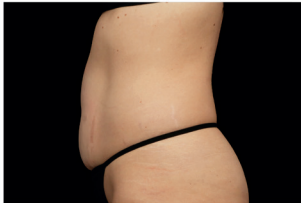


1 MONTH AFTER THE LAST TREATMENT, COURTESY OF: MARIANO BUSSO, M.D.

BEFORE



AFTER **EMSCULPT®** & **EMTONE**



1 MONTH AFTER THE LAST TREATMENT, COURTESY OF: DIANE DUNCAN, M.D.

BEFORE



AFTER **EMSCULPT®** & **EMTONE**



3 MONTHS AFTER THE LAST TREATMENT, COURTESY OF: MARIANO BUSSO, M.D.



**Backed by  
Science**

**15\***

**New  
Clinical  
Studies**

---

EMSCULPT NEO showed consistency in eliminating fat and/or building muscle in all latest clinical studies.

**30\***

**Peer-reviewed  
Publications**

---

More than 30 scientific publications since 2018 make HIFEM-brand technology the most intensively researched technology used in non-invasive body shaping.

**EMSCULPT  
neo\***



# Frequently Asked Questions

## **Why is Emsculpt NEO the ONE in body shaping?**

EMSCULPT NEO is the first procedure to provide simultaneous fat elimination and muscle building in a combined 30-minute session.

## **Am I a candidate?**

Everybody can benefit from more muscles and less fat. Ask your provider if the treatment is suitable for you.

## **What is the treatment time?**

Four 30-minute treatments scheduled once a week are recommended. Your provider will help you create a treatment plan tailored to your specific goals.

## **Is there any downtime?**

### **Any pre/post-treatment preparation?**

EMSCULPT NEO is a non-invasive procedure that requires no recovery time or any pre-treatment preparation.

## **What does it feel like?**

EMSCULPT NEO procedure feels like an intense workout with a warming sensation in the treated area. You can lay down and relax during the treatment.

## **Does it really work?**

YES! EMSCULPT NEO showed consistency in eliminating fat and/or building muscle in seven latest clinical studies. Moreover, 30 scientific publications make HIFEM-brand technology the most intensively researched body contouring technology since its introduction in 2018.

## **How fast will I see results?**

You begin to feel tangible results right after the treatments. Positive results are usually reported two to four weeks after the last session and continue to improve for several weeks following treatment.





**EMSCULPTNEO.COM**  
**#EMSCULPT**



Your results may vary. You may feel intense heat during the treatment, but it should never be painful. If you experience pain during the treatment, immediately discontinue the treatment and speak with your treatment provider. Treatment should not be applied over clothing or scar tissue, or if you have electronic or metal implants. As with any heat-based therapy, burns may result. As with any medical procedure, ask your doctor if the EMSCULPT NEO® procedure is right for you. EMSCULPT NEO® is indicated for non-invasive lipolysis (breakdown of fat) of the abdomen and thighs and reduction in circumference of the abdomen and thighs with Skin Type I to Skin Type VI; and for non-invasive lipolysis (breakdown of fat) of the upper arms limited to skin types II and III and BMI 30 or under. EMSCULPT NEO® is also indicated for improvement of abdominal tone, strengthening of the abdominal muscles, development of firmer abdomen; strengthening, toning, and firming of buttocks, thighs, and calves; and improvement of muscle tone and firmness, for strengthening muscles in arms. BTL Emsella® is intended to provide entirely non-invasive electromagnetic stimulation of pelvic floor musculature for the purpose of rehabilitation of weak pelvic muscles and restoration of neuromuscular control for the treatment of male and female urinary incontinence. EMTONE is intended to provide heating for the purpose of elevating tissue temperature for selected medical conditions such as temporary relief of pain, muscle spasms, and increase in local circulation. EMTONE massage device is intended to provide a temporary reduction in the appearance of cellulite. ©2022 BTL Industries, Inc. and affiliated companies. All rights reserved. BTL®, HIFEM®, EM®, EMSCULPT NEO®, and EMSCULPT® are registered trademarks in the United States of America, the European Union, or other countries. The products, the methods of manufacture or the use may be protected by one or more U.S. or foreign patents or pending applications, see www.btlnet.com/patents. Trademarks EMSCULPT, EMSCULPT NEO, Emsella, EMTONE, EMFEMME 360, EMFACE, and EMBODY are associated with the EM® family of products and services. \*Data on file.

899-75EMCNFMAENUS104; Emsculpt\_Neo\_BR\_FMA\_ENUS104

